



**WANDLE
LEARNING
TRUST**

**ANNUAL REPORT
2018/19**

I'M DELIGHTED TO WELCOME YOU TO OUR ANNUAL REPORT

I hope the report gives you a flavour of achievements and successes of the Trust over the last academic year and our exciting plans for the future.

2018-19 was an important year for the Trust - our first full year of operation, having been formed in January 2018. The achievements of the founding schools, Chesterton Primary and Chestnut Grove Academy, continued to go from strength to strength, the work of the Teaching School expanded with the opening of the English Hub and we welcomed Paxton Academy, a free school in Croydon, into the Trust.

In the following pages you will find more information and detail, on what has been a busy year for the Trust. If you would to know more about us, we would be delighted to hear from you. Our contact details are below.

In the meantime, I would like to congratulate all the pupils who have achieved so well across all the schools in the Trust and thank the staff, Local Academy Committee members and Trustees who have worked so hard for the Trust over the last 12 months.

We are all looking forward to another busy and successful year.

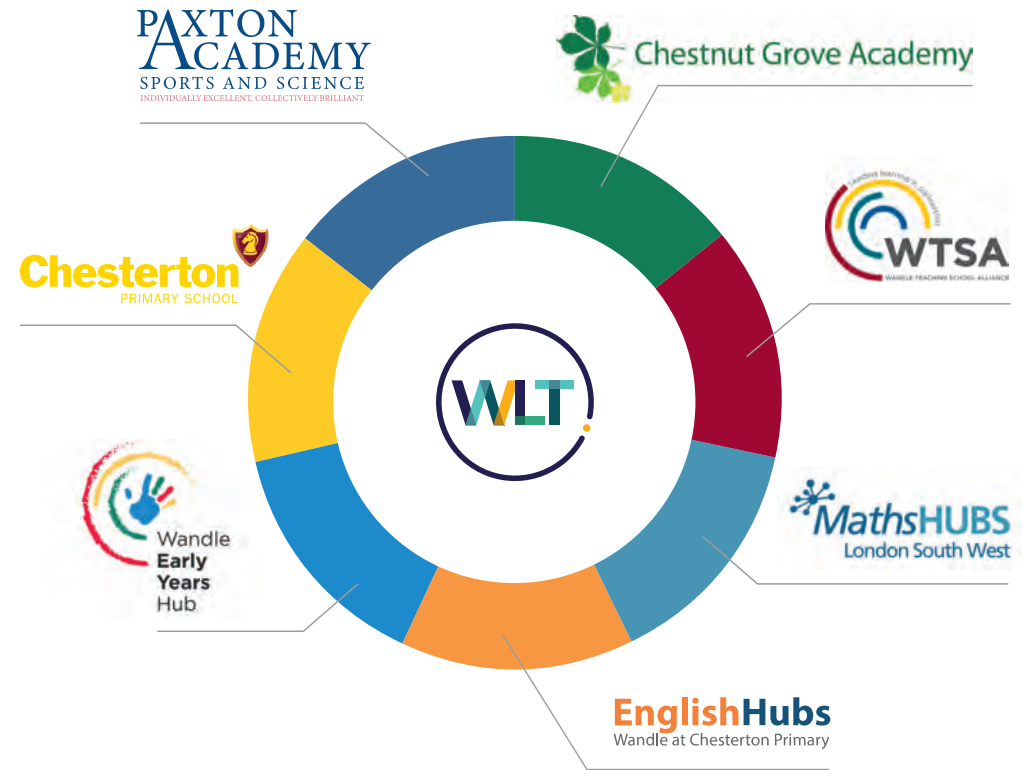
Sian Mathias
Chair of the Trust



About Wandle Learning Trust	3
Students and our vision	4
Joint Executive Headteachers Report	5
Chesterton Primary School	6
Paxton Academy	7
Chestnut Grove Academy	8
Teaching School and Hubs	9
Income	10
Balance Sheet	11
Future Plans	12



WANDLE LEARNING TRUST IS A COMMUNITY OF SCHOOLS AND SERVICES COMMITTED TO PROVIDING AN OUTSTANDING EDUCATION FOR CHILDREN AND YOUNG PEOPLE



KEY INFORMATION

(as at 1st September 2019)

Chesterton Primary School:

463 pupils from Nursery to Year 6

Paxton Academy:

190 pupils from Year R to Year 5

Chestnut Grove Academy:

1078 pupils from Year 7 to Year 13



OUR VISION

- To create a **community of outstanding schools** with the highest expectations of all pupils, regardless of their backgrounds or starting points.
- A firm commitment to the belief **every child** should be given every opportunity **to fulfil their potential**.
- To develop a **learning culture** where **bold and innovative teachers** can make a difference;
- To sustain excellence and **growth** across our community of schools;
- To deliver **high quality professional development** for all members of staff;
- To **secure accountability** based on **transparent** leadership.

WHEN WE FOUNDED THE TRUST IN JANUARY 2018, WE ESTABLISHED A CLEAR VISION UNDERPINNED BY A SET OF VALUES THAT GREW FROM OUR WORK AND PARTNERSHIP OVER A NUMBER OF YEARS.

Reflecting on the past year we are proud to report that our vision and values remain at the heart of our work.

We are looking forward to the Trust continuing to grow over the next 12 months, seeing Paxton Academy moving into its brand new school building and continuing to develop the impact and influence we have on schools beyond the Trust through the work of the Teaching School and Hubs.

At the heart of our work remains what is best for children.

We constantly challenge ourselves and others by asking a simple question:

‘What will the impact of any of our work be on the outcomes and opportunities for the children and young people in our schools?’

While it’s a simple question, the answers can sometimes be complex. The continuing financial pressures, the recent changes in the Ofsted regime and what we expect to be a fast moving policy landscape around schools in the coming 12 months, continue to challenge us.



We are confident that, through our strength in partnership and a strong moral purpose at our core we are more than equal to these challenges.

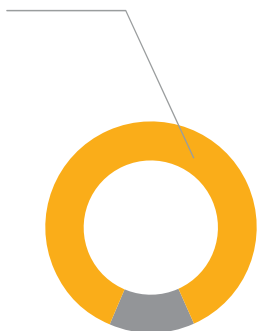
We hope you find this report of interest in laying out some of the highlights of our work. Please do come and see our schools whether you are a prospective parent, a school interested in joining us or working with us or a stakeholder interested in supporting our work to improve the outcomes for our children

Christian Kingsley and Mark Siswick

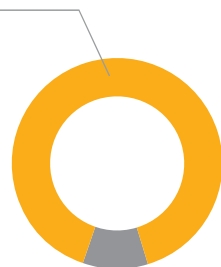
AT CHESTERTON OUR VISION IS TO NURTURE GREAT LEARNERS. WE ARE COMMITTED TO SUPPORTING CHILDREN TO MEET THEIR FULL POTENTIAL FOR THEIR FUTURES, ALLOWING ALL CHILDREN TO SHINE. EVERYTHING WE DO IS UNDERPINNED BY OUR THREE SCHOOL VALUES: PRIDE, RESILIENCE AND KINDNESS.

Pupils achieve exceptionally well at Chesterton. In 2019:

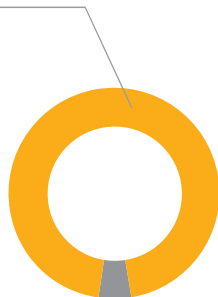
87% of Early Years pupils were considered to have a good level of development.



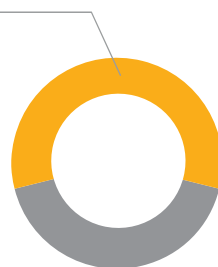
At KS1 the % of pupils achieving age-related expectations was,
86% in Writing
88% in Reading
90% in mathematics



At KS2 **95%** of pupils reached the expected level in Reading, Writing and mathematics (national average is 65%)



Chesterton serves a very diverse area: **49%** of pupils attract the Pupil Premium funding and **58%** of pupils' first language is not English.



PAXTON IS THE LATEST SCHOOL TO BECOME PART OF THE WANDLE LEARNING TRUST, JOINING IN JULY 2019.

We are looking forward to moving into our brand new school building in Spring 2020. It features fantastic indoor and outdoor PE and games spaces, as well as studios for dance, music and drama, and specialist science classrooms.

As a growing free school, Paxton has been in temporary accommodation since it opened in September 2014. It received an Ofsted inspection in November 2019, just a few months after it had joined the Trust.

- **Ofsted (November 2019):** “The new Trust leaders’ ambition is high...Trust leaders provide excellent expertise and support... They have a thorough understanding of what needs to improve and have the skills to do this. They are rightly acting with urgency.”



WHEN STUDENTS JOIN CHESTNUT GROVE ACADEMY, THEY ARE WELCOMED INTO A HIGH ACHIEVING, FORWARD THINKING, CARING COMMUNITY. A TRADITION OF ACADEMIC RIGOUR COMBINED WITH CREATIVITY CHARACTERISES OUR ETHOS AND WE FEEL PASSIONATELY THAT THIS IS A WINNING COMBINATION.

- **Ofsted, January 2019** “The quality of leadership is exceptional. The Headteacher and his team are unwavering and unstinting in their drive to improve the school.”
- “Pupils value their education” “are fully committed to their school” “the behaviour of students is outstanding”.

Year 11: Key Headlines:

47% of students gained at least a strong pass (grade 5) in English and mathematics (England average 43%). Attainment 8 score of 50.5 (England Average 46.5)



Key Stage 5 (Post-16)
56% of A level passes were graded A*-B (National Average-51%)
100% of BTEC entries were a pass with 10% at Distinction*



Chestnut Grove’s Sixth Form has recently been placed in the top 10% of schools nationally for the progress of students between KS4-5.



WANDLE LEARNING TRUST IS THE ONLY ACADEMY TRUST IN THE COUNTRY INCORPORATING A TEACHING SCHOOL AND ENGLISH, MATHS AND EARLY YEARS HUBS – A PRESTIGIOUS ENDORSEMENT

Wandle Teaching School Alliance offers

- Initial Teacher Training
- Continued Professional Development
- School to School Support

SW London Collaboration Wandle English Hub offers

- Phonics
- Closing the Word Gap
- Reading for Pleasure

The South West London Maths Hub offers

- Teaching for Mastery
- Subject knowledge and pedagogy

The Wandle Early Years Hub offers

- Support to develop 2-year old provision
- Advice on the quality of provision
- Promotion of Early Years as a career
- Advice on supporting Children with SEND



	Unrestricted Funds	Restricted General Funds	Restricted Fixed Asset Funds	Total 2019	Total 2018
	£'000	£'000	£'000	£'000	£'000
Income and endowments from:					
Donations and capital grants	27	50	178	255	160
Donations – transfer from local authority on conversion	-	-	-	-	12,941
Donations – transfer of existing academy into the Trust	22	(343)	430	109	-
Charitable Activities					
• Funding for educational operations (ESFA Grant)	373	10,275	-	10,648	8,960
• Funding for Teaching School	173	539	-	712	373
Other trading activities					
	259	102	-	361	261
Investments					
	1	-	-	1	1
	855	10,623	608	12,086	22,695

	2019	2018
	£000	£000
Fixed Assets	47,921	48,057
Current Assets		
Debtors	481	456
Cash at Bank	2,217	1,703
Total Current assets	2,698	2,159
Current Liabilities	(813)	(625)
Net Current Assets	1,885	1,534
Total Assets (less current liabilities)	49,567	49,591
Pension Scheme Liability	(2,577)	(1,343)
Net Assets	46,990	48,248



OUR PLANS FOR THE TRUST IN THE NEW DECADE THAT WILL ENABLE IT TO THRIVE AND GROW.

- Commence building project at Chestnut Grove to provide bespoke Sixth Form Provision Block to complement the new building.
- Develop a new curriculum as we move into our state of the art facilities in Paxton.
- Ensure that the wellbeing, safety and health of our pupils and staff remains at the heart of our work
- Aim for all our schools to be above average against national performance.
- Expand the Trust from 3 to 5 schools.
- Continue to develop central services to support all schools in the Trust.
- Further develop our school-to-school support offer to all schools across London.

